



# Grendal

Kings Orchard  
Marina

£39,950

A 60ft 2005 Viking Afloat 6 berth cruiser stern narrowboat.

Grendal is an ex-fleet Viking Afloat boat with the capacity to cater for up to 6 crew.

With a cruiser stern, as you enter the boat, you pass a handy washroom with basin and WC before entering the first of 2 bedroom cabins . There is wardrobe space throughout these and both cabins can be configured as either a double or 2 single berths.

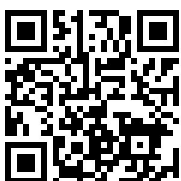
A full bathroom is situated between the bedroom cabins and galley/dinette and this is equipped with hand basin, operated flush toilet, and hipbath/shower. There is also a 240v shaver socket.

The galley provides a 4 burner gas cooker complete with grill and oven, refrigerator, sink and drainer, work surfaces and storage space.

Finally the dinette is in the bow of the boat with seating that converts into either an extra double or 2 singles, before doors that open out onto the fore deck.

If you would like to make an appointment to view, please contact Kings Orchard Marina.

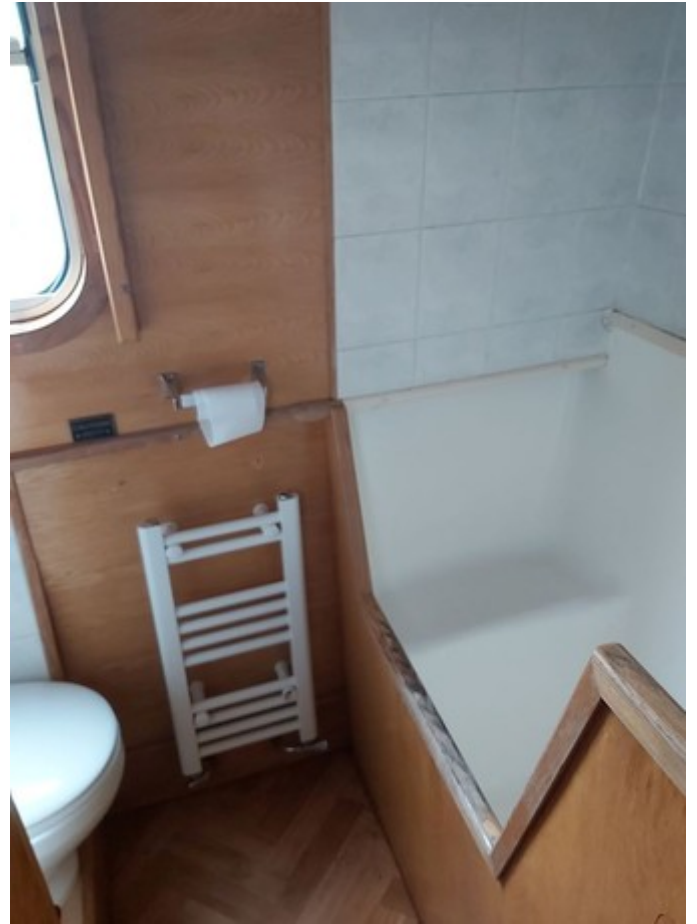
Scan the QR code to view online



Overall length	60 feet
Beam	6 feet 10 inches
Draft	1 feet 10 inches
Headroom	--
No. of berths	6
Style of stern	Cruiser
BSS certificate expiry	26th February 2022
Built	Viking Afloat
Fitout	In 2005 by Viking Afloat
Base	Steel 10mm (approx)
Hull	Steel 6mm (approx)
Cabin	Steel 4mm (approx)
Engine	Nanni 1.9 litre
Gearbox	Hydraulic 150 D2













## General

### General

Name	Grendal
BW index number	513527
Safety certificate	YES
BSS certificate expiry	26th February 2022
BSS certificate number	BSSER-344666/18
Built	Viking Afloat
Location	Kings Orchard Marina
Price	£39,950

### Berths

No. of Berths	6
Double beds	2 (flexible)
Double beds (temp)	1 (Dinette)
Single beds	4 (flexible)
Single beds (temp)	--

### Size

Overall length	60 feet
Overall beam	6 feet 10 inches
Overall draft	1 feet 10 inches
Style of stern	Cruiser

## Structure

### Manufacturer

Manufacturer	Viking Afloat
Hull ID No.	--
Build date	--

### Material

Base	Steel
Hull	Steel
Cabin side	Steel
Roof	Steel

### Original steel thickness

Base	10mm (approx)
Hull	6mm (approx)
Cabin	4mm (approx)

### Hull blacking

Last hull blacking	--
Where	--

### Anodes

Fitted	NO
Date fitted	--
Size	--
No. of anodes	--





## Running gear

### Engine

Make	Nanni 1.9 litre
Model	--
Year	--
Fuel	--
Cooling	--
Hours	--
Last serviced date	--
Last serviced by	--

### Gearbox

Make	Hydraulic 150 D2
Model	--
Year	--
Reduction	--
Coupling	--
Shaft diameter	--
Propellor size	--

## Capacities

Fuel	200 litres (approx)
Water	680 litres (approx)
Gas type	Propane

No. of gas cylinders	4
Gas cylinder size	13kg

## Interior

### Fitted

Fitted by	Viking Afloat
Date fitted	2005

### Materials used

Floor	Marine ply
Hull sides	Oak faced ply
Cabin sides	Oak faced ply
Deckhead	Oak faced ply
Bulkheads	Oak faced ply
Fittings	--





## Equipment

### In the galley

Cooker type	Gas
Cooker model	--
Fridge type	--
Fridge model	--
Other	--

### Heating

Type	Central
Make	Alde
Model	--
Fuel	Gas
Other remarks	Central heating and hot water

### Hot water

Type	Calorifier from Engine or Central heating
Make	--
Model	--
Fuel	--
Other remarks	--
Additional heating	--

### In the bathroom

Bath	--
Shower	Over Bath
Hip bath	Yes
Basin	--
Toilet type	Pumpout
Toilet make	2 x Mansfield
Toilet model	911
Toilet tank capacity	--
Toilet remarks	--

### Electrical systems

DC voltage	12v
No. of batteries (start)	1
No. of batteries (domestic)	3
Split charging	True
Other	--

### 240 volt electrical systems

Inverter make	--
Inverter rating	--
Generator make	--
Generator rating	--
Shoreline	NO
Other	--

## Other

### Additional information

--

