



Kalkara

New Mills Marina

£21,500

A 36ft 1975 Springer 2 berth cruiser stern narrowboat.

This well presented narrowboat has undergone a complete internal refurbishment between 2020 and 2022 and has a very fresh and modern feel throughout.

The cruiser stern is protected by a cratch cover and from here, steps lead down to a side door into the interior of the boat. Immediately to the left as you enter is the bathroom, which contains a smart tiled shower area and a porta potti wc.

Past the bathroom, the space opens out into a lovely open plan saloon and kitchen area. This is currently furnished with a sofa, a galley area with hob and sink, and a freestanding solid fuel stove with tiled surround. There is plenty of storage space by way of drawers and shelves under the sink and also opposite.

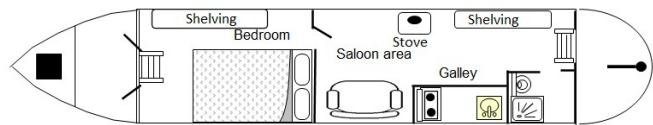
A door leads on into the bedroom, which has a double berth and is attractively decorated in cool mint green, with white shelving above and to the side.

Double doors lead out onto the bow.

Kalkara had a new Boat Safety Certificate issued in July 2022 and is ready to cast off with a new owner!

12 months leisure mooring for the price of 9 at Gayton or Anderton Marina when purchasing this boat.

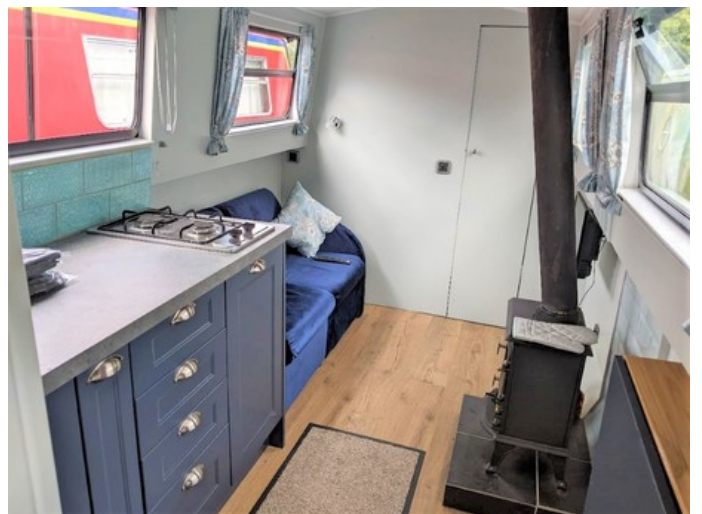
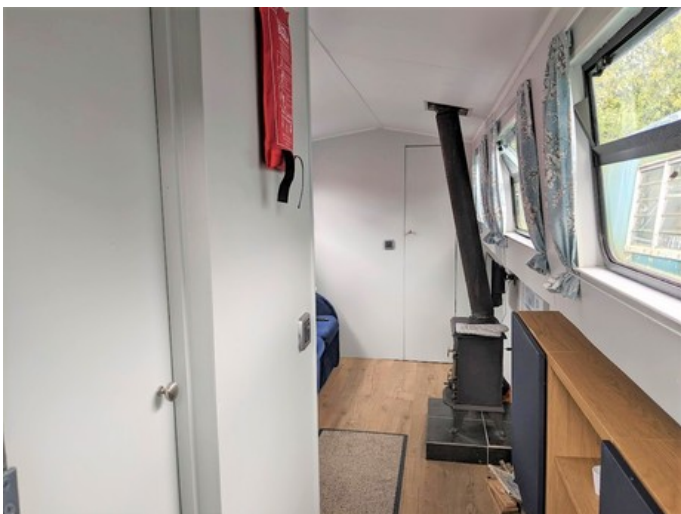
To arrange to view, please contact New Mills Marina on 01663 741310.

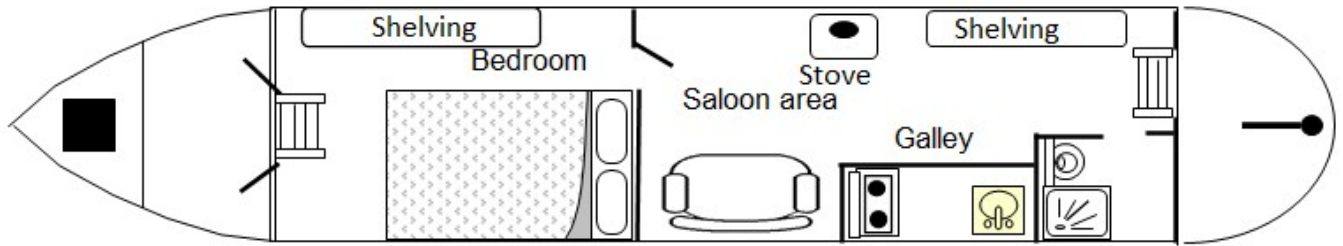


Overall length	36 feet
Beam	6 feet 9 inches
Draft	--
Headroom	--
No. of berths	2
Style of stern	Cruiser
BSS certificate expiry	5th July 2026
Built	In 1975 by Springer Engineering
Fitout	In 2020 by Owner
Base	Steel 5mm
Hull	Steel 5mm
Cabin	Steel 5mm
Engine	Lister SR3
Gearbox	Lister LH150

Scan the QR code to view online









General

General

Name	Kalkara
BW index number	69225
Safety certificate	YES
BSS certificate expiry	5th July 2026
BSS certificate number	BSSER-439801/22
Built	In 1975 by Springer Engineering
Location	New Mills Marina
Price	£21,500

Berths

No. of Berths	2
Double beds	--
Double beds (temp)	1
Single beds	--
Single beds (temp)	--

Size

Overall length	36 feet
Overall beam	6 feet 9 inches
Overall draft	--
Style of stern	Cruiser

Structure

Manufacturer

Manufacturer	Springer Engineering
Hull ID No.	--
Build date	1975

Original steel thickness

Base	5mm
Hull	5mm
Cabin	5mm

Anodes

Fitted	YES
Date fitted	2017
Size	2.5kg
No. of anodes	4

Material

Base	Steel
Hull	Steel
Cabin side	Steel
Roof	Steel

Hull blacking

Last hull blacking	2017-05
Where	--





Running gear

Engine

Make	Lister
Model	SR3
Year	--
Fuel	Diesel
Cooling	Air
Hours	--
Last serviced date	2018-11
Last serviced by	J D Boat Services

Gearbox

Make	Lister
Model	LH150
Year	--
Reduction	--
Coupling	--
Shaft diameter	--
Propellor size	3 x 16in

Capacities

Fuel	--
Water	120 litres
Gas type	Propane

No. of gas cylinders	1
Gas cylinder size	3.9kg

Interior

Fitted

Fitted by	Owner
Date fitted	2020

Materials used

Floor	18mm ply
Hull sides	9mm ply
Cabin sides	6mm ply
Deckhead	--
Bulkheads	6mm ply
Fittings	--





Equipment

In the galley

Cooker type	Built in hob
Cooker model	--
Fridge type	--
Fridge model	--
Other	Sink

Heating

Type	Solid fuel stove
Make	Lincsfire
Model	Harmstone
Fuel	Wood
Other remarks	--

Hot water

Type	LPG boiler
Make	Cointra
Model	--
Fuel	LPG
Other remarks	--
Additional heating	--

In the bathroom

Bath	--
Shower	Yes
Hip bath	--
Basin	--
Toilet type	Chemical
Toilet make	Thetford
Toilet model	92820
Toilet tank capacity	--
Toilet remarks	--

Electrical systems

DC voltage	12v
No. of batteries (start)	1
No. of batteries (domestic)	2
Split charging	True
Other	--

240 volt electrical systems

Inverter make	--
Inverter rating	--
Generator make	--
Generator rating	--
Shoreline	NO
Other	--

Other

Additional information

--

