



Mon Amour

Alvechurch
Marina

£47,000

A 57ft 1987 Limekiln Narrowboats 3 berth semi traditional stern narrowboat.

Mon Amour is a semi traditional stern narrowboat, perfect as a live aboard vessel and for holidays afloat.

Descending from the stern steps, you will first enter the bedroom. This has a double bed with a storage cupboard and wardrobe space.

Next is the bathroom. This contains a shower cubicle, vanity unit and toilet.

Following this is a well equipped galley. This has a hob, separate integrated oven and grill, fridge and a double sink. There is also ample worktop space and under counter storage.

The saloon follows on from this. This contains a Welsh dresser style unit, a sofa that can be converted into a single berth if necessary, ornate wall lighting and a solid fuel stove.

Steps from the saloon lead out through double doors with pretty stained glass style windows to the bow area.

Mon Amour has central heating throughout.

We are in the process of getting a new Boat Safety Certificate issued for Mon Amour.

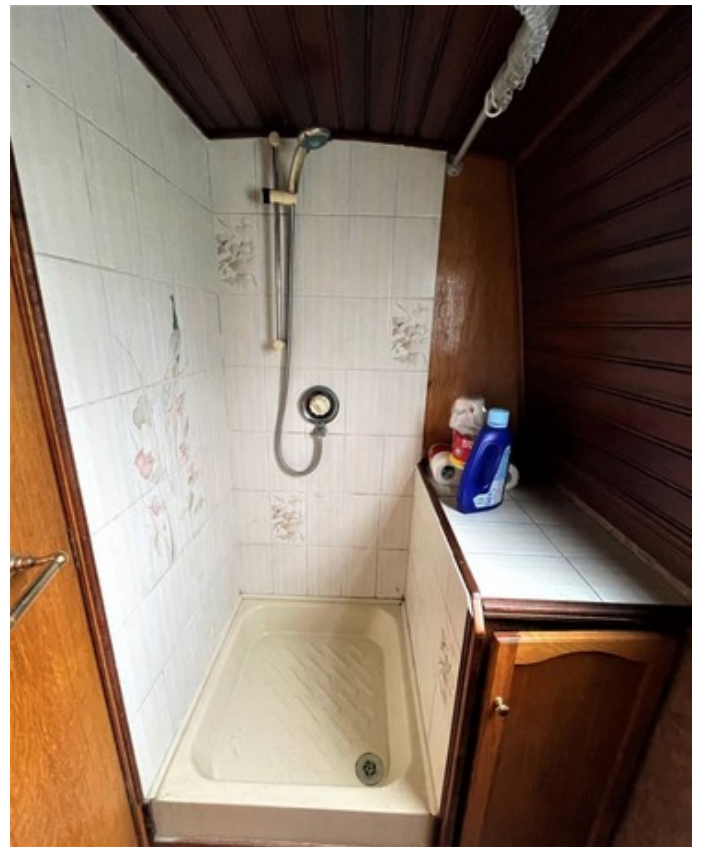
To arrange a viewing or make an enquiry, please contact Alvechurch Marina on 0121 445 1133.

Scan the QR code to view online



Overall length	57 feet
Beam	6 feet 10 inches
Draft	--
Headroom	--
No. of berths	3
Style of stern	Semi-Traditional
BSS certificate expiry	--
Built	In 1987 by Limekiln Narrowboats
Fitout	
Base	Steel Unknown
Hull	Steel Unknown
Cabin	Steel Unknown
Engine	Perkins 3HD46 MK2
Gearbox	PRM 160









General

General

Name	Mon Amour
BW index number	50967
Safety certificate	YES
BSS certificate expiry	--
BSS certificate number	New Certificate to be issued
Built	In 1987 by Limekiln Narrowboats
Location	Alvechurch Marina
Price	£47,000

Berths

No. of Berths	3
Double beds	1
Double beds (temp)	--
Single beds	1
Single beds (temp)	--

Size

Overall length	57 feet
Overall beam	6 feet 10 inches
Overall draft	--
Style of stern	Semi-Traditional

Structure

Manufacturer

Manufacturer	Limekiln Narrowboats
Hull ID No.	--
Build date	1987

Material

Base	Steel
Hull	Steel
Cabin side	Steel
Roof	Steel

Original steel thickness

Base	Unknown
Hull	Unknown
Cabin	Unknown

Hull blacking

Last hull blacking	--
Where	--

Anodes

Fitted	YES
Date fitted	--
Size	--
No. of anodes	--





Running gear

Engine

Make	Perkins
Model	3HD46 MK2
Year	1987?
Fuel	Diesel
Cooling	--
Hours	--
Last serviced date	--
Last serviced by	--

Gearbox

Make	PRM
Model	160
Year	--
Reduction	--
Coupling	--
Shaft diameter	--
Propellor size	--

Capacities

Fuel	--
Water	--
Gas type	Propane

No. of gas cylinders	3
Gas cylinder size	13kg

Interior

Fitted

Fitted by	--
Date fitted	--

Materials used

Floor	--
Hull sides	--
Cabin sides	--
Deckhead	--
Bulkheads	--
Fittings	--





Equipment

In the galley

Cooker type	Rose 6070 Oven and Vanette 4000/2 Hob
Cooker model	--
Fridge type	Engel 12v
Fridge model	SRBD-5108BF-T-A
Other	--

Heating

Type	Central Heating
Make	Alde
Model	Comfort 2928
Fuel	LPG
Other remarks	--

Hot water

Type	Instantaneous
Make	Paloma
Model	Mark VI
Fuel	LPG
Other remarks	--
Additional heating	Morso 1410 Squirrel Solid Fuel Stove

In the bathroom

Bath	--
Shower	Yes
Hip bath	--
Basin	Yes
Toilet type	--
Toilet make	--
Toilet model	--
Toilet tank capacity	--
Toilet remarks	--

Electrical systems

DC voltage	12v
No. of batteries (start)	--
No. of batteries (domestic)	--
Split charging	--
Other	--

240 volt electrical systems

Inverter make	Sterling
Inverter rating	30A
Generator make	--
Generator rating	--
Shoreline	NO
Other	--

Other

Additional information

--

