



Rachel

Alvechurch
Marina

£72,000

A 69ft 2010 Reeves 2 berth traditional stern narrowboat.

Rachel is an attractive, well presented traditional stern narrowboat and offers a perfect opportunity for live aboard or holidays afloat.

The exterior is painted with a dark navy blue livery and the hull was last blacked in 2019.

The stern door leads into the bedroom with a double bed and plenty of wardrobe space.

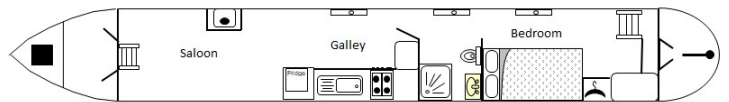
Following on from this, there is a beautiful tiled bathroom. This comes with a cassette toilet, vanity unit and a large shower.

The galley follows this and is equipped with an oven, hob, sink, fridge and freezer.

Finally there is a spacious saloon area. This has a multi fuel stove and plenty of space for furniture. Steps then lead you to the bow deck where you can enjoy the stunning view found on our waterways.

12 months leisure mooring for the price of 9 at Gayton or Anderton Marina when purchasing this boat.

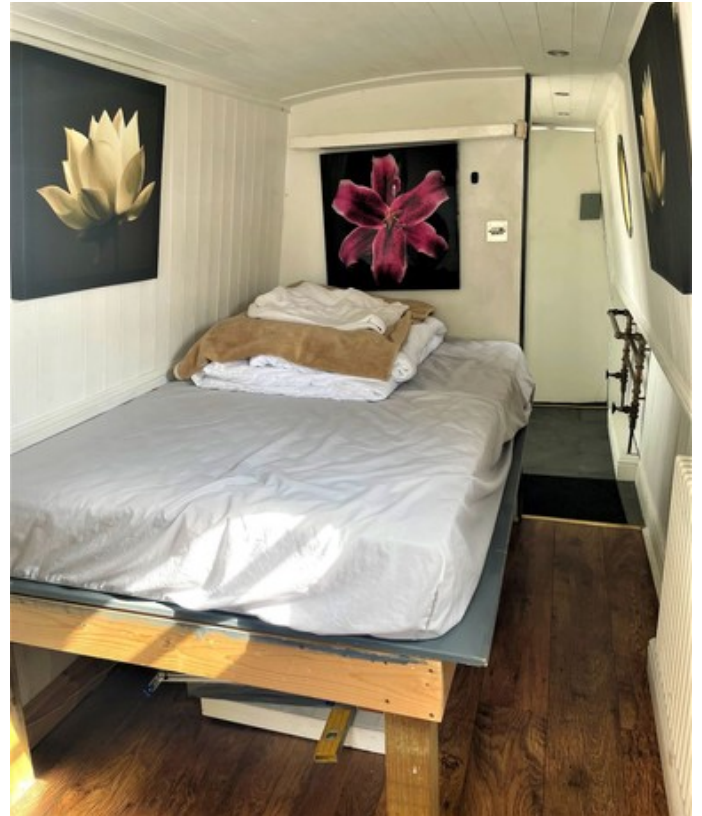
To arrange a viewing or make an enquiry, please contact Alvechurch Marina on 0121 445 1133

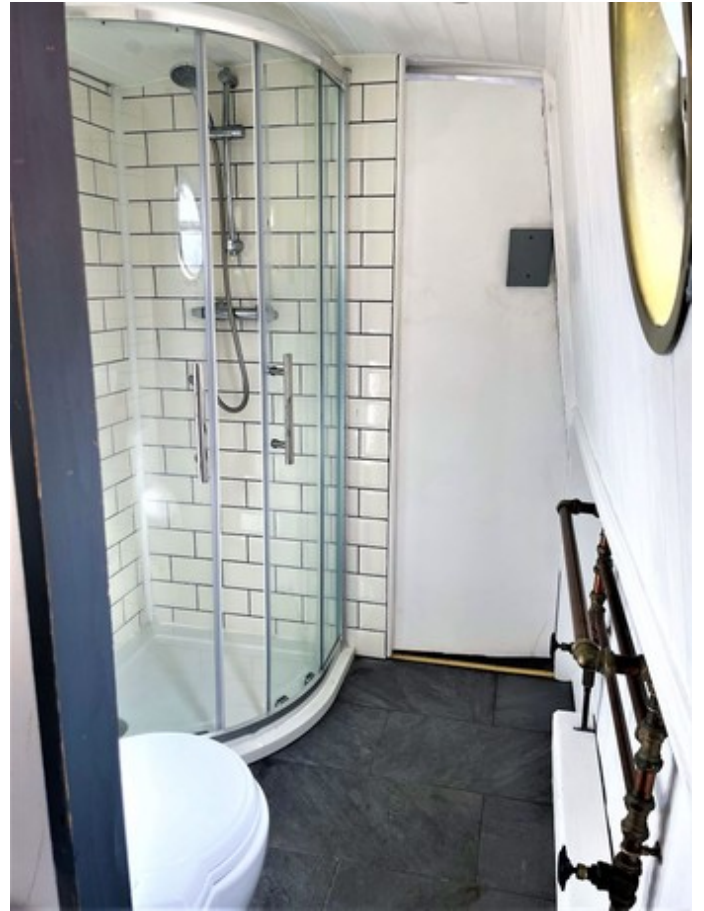


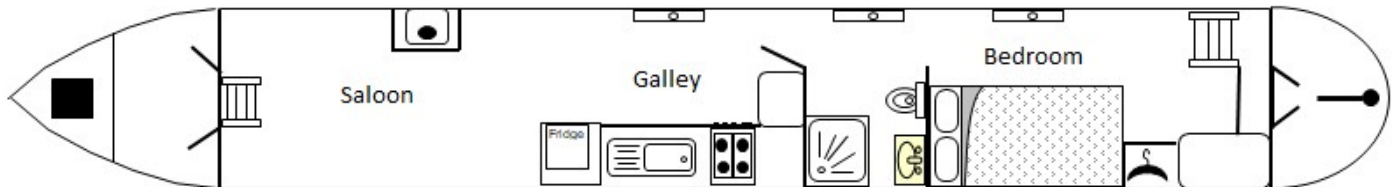
Overall length	69 feet
Beam	6 feet 10 inches
Draft	--
Headroom	6 feet 5 inches
No. of berths	2
Style of stern	Traditional
BSS certificate expiry	1st June 2023
Built	In 2010 by Reeves
Fitout	Owner
Base	10mm
Hull	6mm
Cabin	4mm
Engine	Vetus 42
Gearbox	Unknown

Scan the QR code to view online











General

General

Name	Rachel
BW index number	525027
Safety certificate	NO
BSS certificate expiry	1st June 2023
BSS certificate number	BSSER-369224/19
Built	In 2010 by Reeves
Location	Alvechurch Marina
Price	£72,000

Berths

No. of Berths	2
Double beds	1
Double beds (temp)	--
Single beds	--
Single beds (temp)	--

Size

Overall length	69 feet
Overall beam	6 feet 10 inches
Overall draft	--
Style of stern	Traditional

Structure

Manufacturer

Manufacturer	Reeves
Hull ID No.	--
Build date	2010

Original steel thickness

Base	--
Hull	--
Cabin	--

Anodes

Fitted	NO
Date fitted	--
Size	--
No. of anodes	--

Material

Base	10mm
Hull	6mm
Cabin side	4mm
Roof	--

Hull blacking

Last hull blacking	2019
Where	--





Running gear

Engine

Make	Vetus
Model	42
Year	--
Fuel	Diesel
Cooling	--
Hours	462
Last serviced date	2019
Last serviced by	--

Gearbox

Make	Unknown
Model	--
Year	--
Reduction	--
Coupling	--
Shaft diameter	--
Propellor size	--

Capacities

Fuel	--
Water	--
Gas type	--

No. of gas cylinders	--
Gas cylinder size	--

Interior

Fitted

Fitted by	Owner
Date fitted	--

Materials used

Floor	--
Hull sides	--
Cabin sides	--
Deckhead	--
Bulkheads	--
Fittings	--





Equipment

In the galley

Cooker type	Thetford
Cooker model	--
Fridge type	yes
Fridge model	--
Other	Freezer

Heating

Type	--
Make	Morso
Model	Squirrel
Fuel	Multi
Other remarks	--

Hot water

Type	Calorifier
Make	Surecall
Model	--
Fuel	--
Other remarks	Twin Coil
Additional heating	Webasto Central Heating 3 Radiators and heated towel rail

In the bathroom

Bath	--
Shower	Yes
Hip bath	--
Basin	Yes
Toilet type	Cassette
Toilet make	Thetford
Toilet model	--
Toilet tank capacity	--
Toilet remarks	--

Electrical systems

DC voltage	--
No. of batteries (start)	1
No. of batteries (domestic)	3
Split charging	--
Other	--

240 volt electrical systems

Inverter make	Victron 3000
Inverter rating	120
Generator make	--
Generator rating	--
Shoreline	YES
Other	--

Other

Additional information

--

